



STRONG.

High stability
and durability

EFFICIENT.

Maximum endurance
and easy maintenance

INTELLIGENT.

Smart technology with
adjustable power

A tradition of innovation and reliability.



Tailor-made design and production



Machinery Tradition since 1879

Long-load
transport

Founded as Schöberl & Söhne Motoren- und Maschinenfabrik, the company specialised in the development and production of JUMBO sideloaders from the 1980s onwards, thus creating an iconic product. This significant step was followed by many more on the path to market leadership in this segment.

Typical BULMOR

However, the company did not just develop internally but integrated the technology of the industry pioneers IRION, LANCER and SHS into its skillset. In this way, BULMOR developed its strengths into clear competitive advantages for customers and users.

- ROBUST
- EFFICIENT
- SAFE
- ECONOMICAL

Home of the BULLS



www.bulmor.com



Typical BULMOR: ROBUST . EFFICIENT . SAFE . ECONOMICAL

Complete safety and stability
with long goods at high lifting heights
thank to the one-piece NOTOXframe.

NOTOX_{FRAME} the heart of a BULMOR

ensures fast logistics processes



NOTOX_{FRAME}

Straight mast at all times thanks to the one-piece frame

A tiltable frame additionally allows correction of the mast and ensures stability at high lifting heights in the smallest aisle widths.

Smooth, safe driving thanks to BULMOR pendulum compensation

Hydraulic pendulum compensation ensures the wheels stay in constant contact with the ground and keeps the load level.

Maintenance-free BULMOR with low-wear toothed belt drive

A low-wear toothed belt is practically maintenance-free and allows smooth handling.

As with any vehicle, the drive concept and chassis determine the active driving characteristics.

+20%

energy efficiency

BULMOR
a symbiosis of
hydraulics and
electronics.

BENEFIT FROM OUR
ENERGY-EFFICIENT VEHICLES.



Multidirectional sideloaders | Maximum efficiency for internal goods flows

Multidirectional Bulls with **Save-Plus** system

Maximum
performance
with minimum
consumption.



EMU 20 // 25 // 30

Classic Line ☆☆

The compact and versatile EMU version with 48 V battery and multidirectional steering is flexibly adaptable and shows its strength with loads of up to 3 tonnes of long goods.

Fig. BMS with longitudinal cabin

BMS 30 // 35 // 40 // 45 // 50 // 55 // 60 // 70 // 80 // 90 // 100

Premium Line ☆☆☆

The all-rounder among the multidirectional sideloaders delivers the highest performance thanks to the 80 V Save-Plus system.

Fig. BMS with transverse cabin

Premium Line ☆☆☆

A heavy-duty multidirectional sideloader that transports even heavy loads with stability, thus ensuring safety and economy for both the goods and the driver.

Fig. BMS with full cabin

The smallest possible working aisle width can be achieved by choosing from a range of different cabins.



New energy-efficient control technology

The innovative interaction of hydraulic and electronic components creates up to 20% more energy efficiency.

- Measurable extension of your operating times
- Less heat development even during tougher applications
- Smooth steering programme change during driving

Universal Multidirectional Sideloader **NEW** in the team



BMU: the universal brother of the BMS

with
**Save-Plus
System**

With the BMU, BULMOR has expanded its series of electric multidirectional side loaders in the 48 volt power range.

As a multidirectional side loader with true multidirectional steering, the BMU comes in platform widths from 800 to 1800 mm.



Universal loader BMU 35 - 45

The BMU is an outstandingly agile and compact universal loader with multidirectional steering for handling pallets and long goods.

- PU tyres for indoor operation
- Optional elastic tyres for combined indoor and outdoor operation
- 48 volt drive
- Load capacities from 3,5 to 4,5 tonnes
- with efficient technology of the BMS series

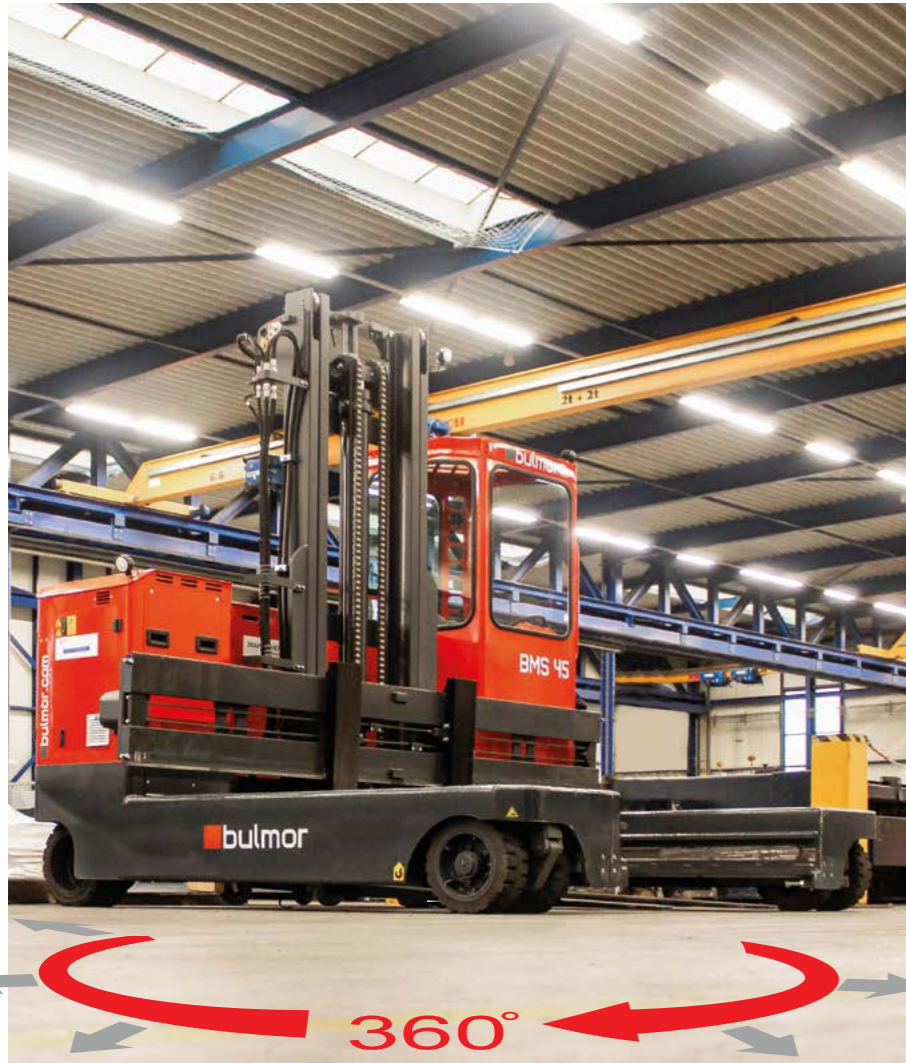
48 volt drive

transport of pallets and long goods

| Serie | BMU 35 - 45 |
|----------------------|---|
| Lifting capacity (t) | up to 3,5 // 4 // 4,5 |
| Aisle width | 2150 - 2950 (35) 2250 - 3050 (40-45) |
| Width NB (mm) | 1200 optional: 800-1800 |
| Lifting height (mm) | 3500 - 8000 |
| Total length L (mm) | 3230 (35) 2900 (40-45) |
| Well width E (mm) | 1380 |

A Standard you can count on.

Quality with around the clock availability.



BULMOR INFO terminal

State-of-the-art computer technology on a BULMOR allows easy reading of driver and customer service information.

- Service and maintenance intervals
- Wheel position indicator
- Steering programme display
- Driver access authorisation by code and much more



Operation:

A modern joystick allows sensitive operation of all hydraulic functions with millimetre precision.

Multidirectional steering system with 12 steering programmes

Lengthwise: transport material quickly and safely through narrow aisles

Widthwise: use the loader like a conventional forklift

Circular: rapid turning in narrow aisles

Diagonal: safe loading and unloading of trucks



Save storage space with track guidance systems

For maximum utilisation of the bearing surface, we offer mechanical track guidance via rollers or inductive track guidance.

Minimum maintenance work thanks to BULMOR toothed belt extension system

The new BULMOR system with a low-wear toothed belt enables sensitive and smooth handling of your goods.

This design is not susceptible to dirt and re-tensioning work is almost entirely eliminated, meaning that hardly any maintenance is



Vulkollan (PU) for smooth industrial floors



Elastic tyres with or without profile for uneven floors and outdoor operation



Tyres: Whether you are working with smooth industrial floors, a poor standard of flooring or even using the device outdoors, protecting your floors, your machine and the health of your drivers is our priority. BULMOR recommends Vulkollan tyres (PU) for smooth industrial floors, and soft elastic tyres (EL) to protect the machine for uneven floors or outdoor operation.

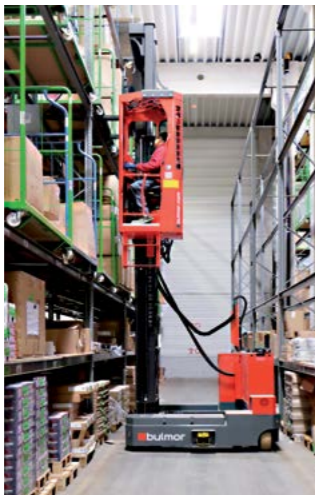
For long, heavy and bulky goods.

A BULMOR for every application

Tailor-made solutions for indoor and outdoor use.

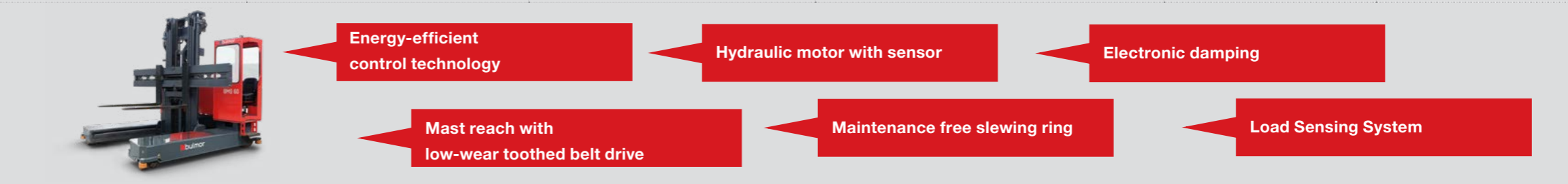
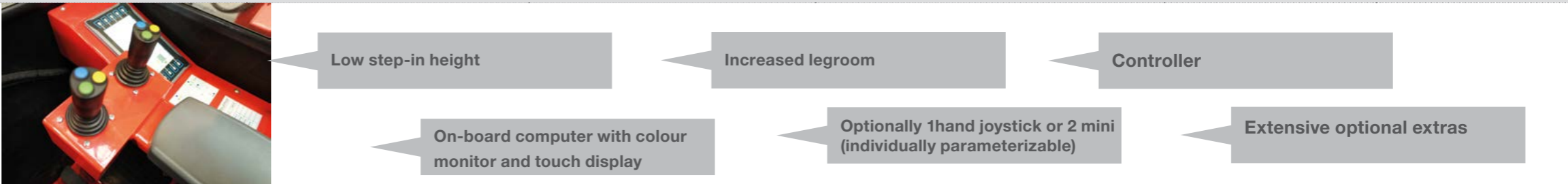
Individually designed and produced for the industries:

- WOOD TRANSPORT
- METAL TRANSPORT
- PLASTICS
- ALUMINIUM
- AUTOMOTIVE
- BUILDING MATERIAL TRANSPORT
- SHEET METAL INDUSTRY
- COILS
- TRANSPORT OF WINDOWS AND DOORS
- AIR TRAVEL



The experts in exceptionally long applications:

safe, fast and economical in various applications all over the world.

| | Classic Line | Premium Line | | | | | |
|--|---|---|--|---|---|---|--|
| MULTIDIRECTIONAL SIDeloader Electric | EMU 20 // 25 // 30 Vulkollan® | BMU 35 // 40 // 45 Vulkollan® // Elastic | BMS 30 // 35 Vulkollan® // Elastic | BMS 40 // 45 Vulkollan® // Elastic | BMS 50 // 55 // 60 // 70* Vulkollan® // Elastic <small>*BMS 70 only with Vulkollan® available</small> | BMS 70 // 80 Vulkollan® // Elastic | BMS 90 // 100 Vulkollan® |
| Drive | 48 Volt | 48 Volt | 80 Volt | 80 Volt | 80 Volt | 80 Volt | 80 Volt |
| Lifting capacity | up to 2 // 2,5 // 3 tons | up to 3,5 // 4 // 4,5 tons | up to 3 // 3,5 tons | up to 4 // 4,5 tons | up to 5 // 5,5 // 6 // 7 tons | up to 7 // 8 tons | up to 8 // 9 // 10 tons |
| Standard lift (h3) | 3500 - 8000 mm | 3500 - 8000 mm | 3500 - 8000 mm | 3500 - 8000 mm | 3500 - 8000 mm | 3500 - 8000 | 3500 - 8000 mm |
| Overall dimension (L x B x H) by NB=1200 | 2960 x 1950 x 2400 | 3230 x 1950 x 2640 (BMU 35) 2900 x 2050 x 2670 (BMU 40-45) | 3230 x 1950 x 2640 | 3100 x 2050 x 2670 | 3100 x 2150 x 2670 3500 x 2150 x 2795 (Elastic) 3100 x 2200 x 2670 (VB) (BMS 70)* | 3800 x 2250 x 2880 | 4100 x 2450 x 3250 |
| Aisle width by NB=1200 | 1750-2550 | 2150-2950 2250-3050 (BMU 40-45) | 2150 - 2950 | 2250 - 3050 | 2350 - 3150 2400 - 3200 (BMS 70)* | 2450 - 3250 | 2650 - 3450 |
| Load centre | 600 | 600 | 600 | 600 | 600 | 600 | 600 |
| Useable platform with GT | Standard: 1200 Optional: 800 - 1800 | Standard: 1200 Optional: 800 - 1800 | Standard: 1200 Optional: 800 - 1800 | Standard: 1200 Optional: 800 - 2200 | Standard: 1200 Optional: 800 - 2300 (1000-2300 BMS70) | Standard: 1200 Optional: 1000 - 2800 | Standard: 1200 Optional: 1200 - 2800 |
| Turning radius | 1770 | 1900 // 1750 // 1750 | 1850 | 1850 | 1880 (2050 Elastic) | 2100 | 2350 |
| Platform height | 400 | 400 (500 Elastic) | 400 (500 Elastic) | 400 (500 Elastic) | 450 (575 Elastic) | 600 | 600 |
| Well width (E) | 1380 | 1380 | 1380 | 1580 | 1620 | 1620 | 2300 |
| Fork distance (GTL) | 1250 | 1270 | 1270 | 1460 | 1460 | 1460 | 2100 |
| Drive motor | AC-Technology 2 x 3,9 kW | AC-Technology 2 x 5 kW | | | | AC-Technology 2 x 7,5 kW | t.b.a. |
| Working hydraulics | AC-Technology 1 x 11 kW | AC-Technology 1 x 21 kW | AC-Technology 1 x 18 kW optional: 1 x 28 kW | AC-Technology 1 x 28 kW | | t.b.a. | |
| Battery | 48 V up to 930 Ah | 48 V up to 930 Ah | 80 V up to 775 Ah | 80 V up to 930 Ah | 80 V up to 930 Ah | 80 V - 930 Ah | 80 V up to 1240 Ah |
| Tyres | Vulkollan® 2x ø343 x 140 (K), 4x ø250 x 80 (L) Super Elastic Tyres optional | Vulkollan® 2x ø406 x 178 (K), 4x ø285 x 100 (L) Elastic 2x ø457 x 203 // 229 BMU40-45 (K), 4x ø 406 x 152 (L) | Vulkollan® 2x ø406 x 178 (K), 4x ø285 x 100 (L) Elastic 2x ø457 x 203 (K), 4x ø406 x 152 (L) | Vulkollan® 2x ø 406 x 178 (K) , 4x ø285 x 100 (L) Elastic 2x ø457 x 229 (K) 4x ø406 x 152 (L) | Vulkollan® 2x ø406 x 178 (K) , 8x ø285 x 75 (L) Elastic 2x ø559 x 254 (K) , 4x ø457 x 203 (L) (BMS 50 //55) Elastic 2x ø559 x 305 (K) , 4x ø457 x 203 (L) (BMS 60) | Vulkollan® 2x ø711 x 254 (K) 4x ø457 x 203 (L) Elastic 2x ø711 x 305 (K) 4x ø457 x 229 (L) | Vulkollan® 4x ø406 x 203 (K), 8x ø400 x 100 (L) |
| Technology | AC Technology compact & mobile 12 steering system standard flexible applicable (465 up to 930 Ah) Vulkollan & Elastic Tyres |  | | | | | |
| Cabine | Can be customized with standard options |  | | | | | |
| Type of cabin | standard: Longitudinal: 670 x 1000 mm optional: Longitudinal rear entry 670 x 1000 mm Lateral cabin: 800, 850, 900 x 670 mm Lateral cabin: 800, 850, 900 x 900 mm Diagonal Diagonal cabin: 850 x 1000 mm | standard BMU 35: Lateral cabin: 670 x 1000 mm standard BMU 40-45: Lateral cabin: 800 x 670 mm | standard: Longitudinal: 670 x 1000 mm optional: Longitudinal rear entry 670 x 1000 mm Lateral cabin: 800, 850, 900 x 670 mm Lateral cabin: 800, 850, 900 x 900 mm Diagonal cabin: 850 x 1000 mm | standard: Lateral cabin: 800 x 670 mm optional: Longitudinal: 670 x 1000 mm Longitudinal rear entry: 670 x 1000 mm Lateral cabin: 850, 900 x 670 mm Lateral cabin: 800, 850, 900 x 900 mm Diagonal cabin: 850 x 1000 mm | standard Vulkollan: Lateral cabin 900 x 670 mm standard Elastic: Lateral cabin 900 x 900 mm optional: Lateral cabin: 800, 850, 900 x 670 mm Lateral cabin: 800, 850, 900 x 900 mm Diagonal cabin: 850 x 1000 mm LK front seat: 800 x 1350 mm (NUR EB) | standard: Lateral cabin 900 x 900 mm optional: LK front seat: 800 x 1350 mm | standard: Lateral cabin: 1100 x 950 mm |

Typisch BULMOR - more than others.

The Machines in the BULMOR fleet stands for power and robustness, as well as efficiency and safety.

Every machine is created using the experience and genes of more than 45 years of experience in the field of forklift construction. With this strength, coupled with today's modern technical know-how, we build smart solutions for strong operations.

Bulmor industries GmbH
Kickenau 1
A-4320 Perg

t +43 7262 58397-0
e info@bulmor.com
www.bulmor.com

Bulmor Lancer Ltd.
Chartmoor Road
Leighton Buzzard
UK-LU7 4GW Beds

t +44 1525 378 000
e info@bulmor.com
www.bulmor-lancer.com

Votex Bison
Material Handling B.V.
Croy 30
NL-5653 LD Eindhoven

t +31 40 2263 219
e info@votex-bison.com
www.votex-bison.com

Bulmor Sonderfahrzeuge GmbH
MKF Kompaktstapler & Sonderfahrzeuge
August-Horch-Straße 43
D-56751 Polch

t +49 2654 881322
e info@mkf-kompaktstapler.de
www.mkf-kompaktstapler.de

www.bulmor.com